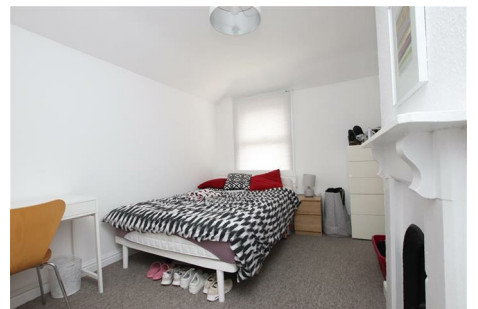
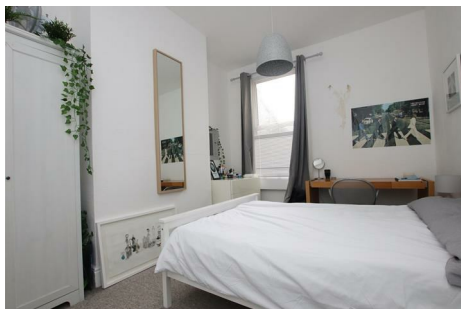




ASPIRE

— TO MOVE —



Lower Bristol Road, Bath, BA2

Video and physical viewings available. Five bedroom student property available from the 5th August 2026. The property is offered fully furnished and comes with parking at the rear for two cars.

The property is located on Lower Bristol Road, 0.2 miles south west of Bath city centre. The property has great access to local amenities on Lower Bristol Road and Sainsbury's supermarket is 0.1 miles away. There is a bus stop with access to the U1 & U5 routes 50 meters away.

£3,750 PCM

Lower Bristol Road, Bath, BA2

- Five double bedroom student property
- Garden
- Holding deposit: £865
- Furnished
- Available 5th August 2026
- Council tax band C if applicable
- Two parking spaces
- Central location

FULLY BOOKED

Video and physical viewings available. Five bedroom student property available from the 5th August 2026. The property is offered fully furnished and comes with parking at the rear for two cars.

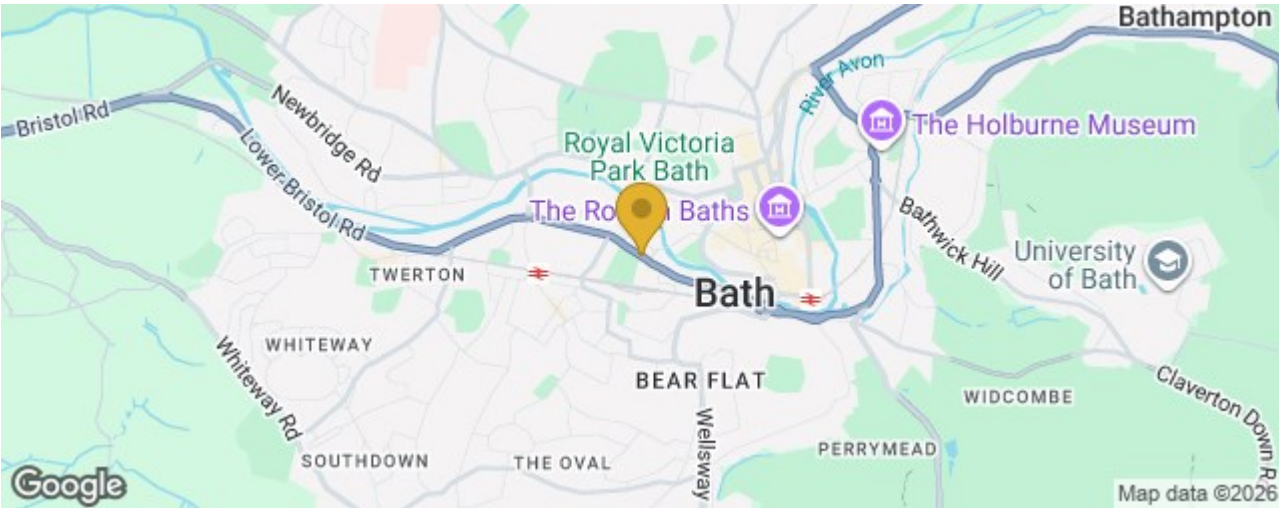
The property is located on Lower Bristol Road, 0.2 miles south west of Bath city centre. The property has great access to local amenities on Lower Bristol Road and Sainsbury's supermarket is 0.1 miles away. There is a bus stop with access to the U1 & U5 routes 50 meters away.

On the ground floor the property has a living room to front with two sofa's, coffee table, tv unit and tv. The kitchen is located to the rear and has base and wall units, cooker, hob, fridge, chest freezer and dishwasher. Cutlery and crockery is also provided. There is a downstairs WC and as well as a washer/dryer. The the first of the five bedrooms is also located on the ground floor which has double bed, chest of drawers, and a wardrobe.

On the first floor there are four further bedrooms and shower room. Bedroom two is located to the rear and comes with double bed, chest of drawers, desk and chair. Bedroom three is located in the middle of the house and has double bed, desk, chair, chest of drawers and built in wardrobe. Bedroom four has wardrobe space and double bed. Bedroom five comes with a double bed, wardrobe, chest of drawers, desk and chair.

The property has a garden to the rear and parking for two cars.

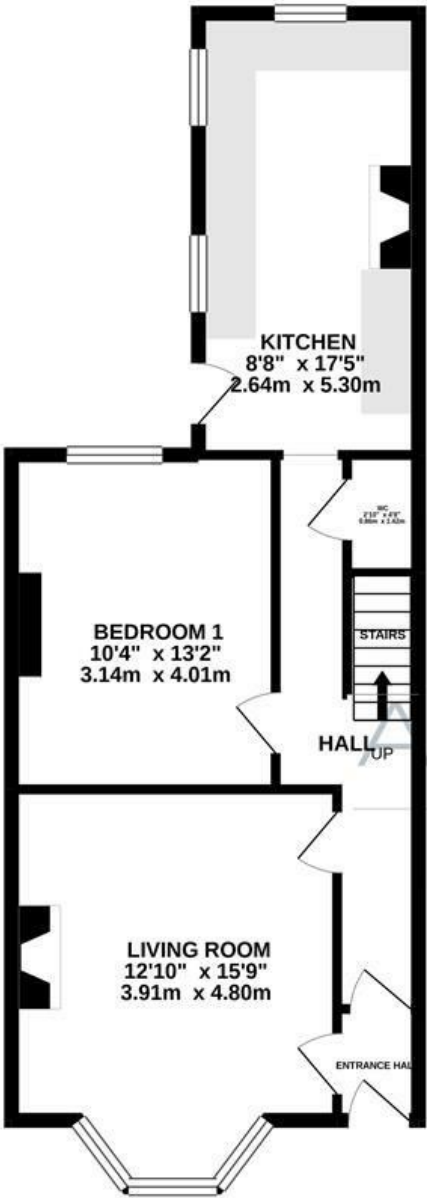
Available to five students from the 5th August 2026. Offered furnished.



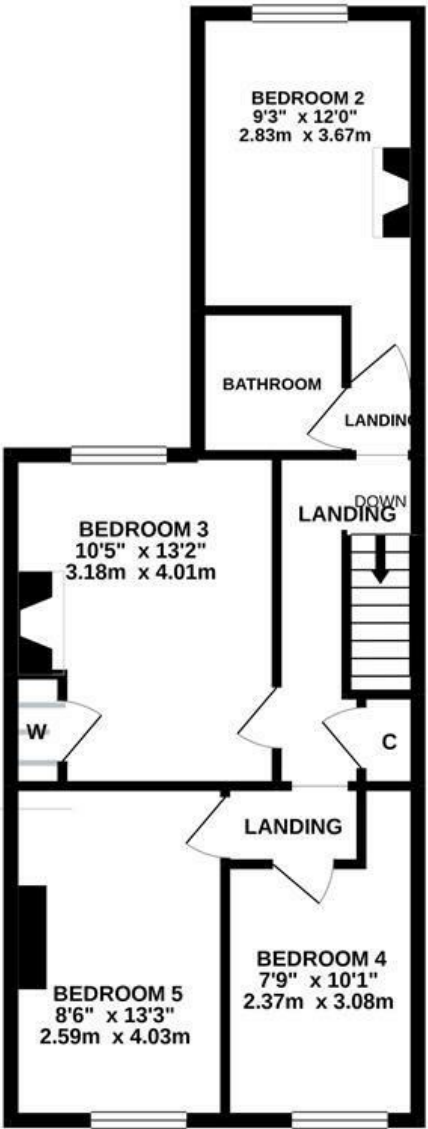


Floor Plan

GROUND FLOOR
571 sq.ft. (53.0 sq.m.) approx.



1ST FLOOR
556 sq.ft. (51.7 sq.m.) approx.



LOWER BRISTOL ROAD, BATH, BA2

TOTAL FLOOR AREA : 1127 sq.ft. (104.7 sq.m.) approx.

Whilst every attempt has been made to ensure the accuracy of the floorplan contained here, measurements of doors, windows, rooms and any other items are approximate and no responsibility is taken for any error, omission or mis-statement. This plan is for illustrative purposes only and should be used as such by any prospective purchaser. The services, systems and appliances shown have not been tested and no guarantee as to their operability or efficiency can be given.

Made with Metropix ©2020

These particulars, whilst believed to be accurate are set out as a general outline only for guidance and do not constitute any part of an offer or contract. Intending purchasers should not rely on them as statements of representation of fact, but must satisfy themselves by inspection or otherwise as to their accuracy. No person in this firms employment has the authority to make or give any representation or warranty in respect of the property.

